

GOVERNMENT OF NEW CALEDONIA

*Department of veterinary, food
and rural affairs*

**Agricultural
Memorandum
2004**

*Water and Rural Statistics and
Surveys Department*

Farming and Food Monitoring Unit



209, rue Auguste Bénébig - HAUT MAGENTA

B.P. 256 - 98845 NOUMEA Cedex

• Tél : (687) 25.51.25. • Fax : (687) 25.51.29.

e-mail : oaa.davar@gouv.nc

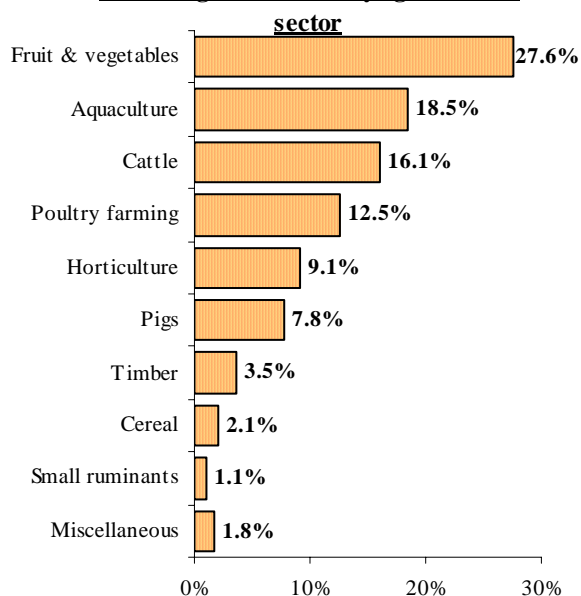
June 2005

The figures for 2004 shown in this memorandum are provisional (data available as on 30th June 2005) and may be modified in future publications.

The publications of the FFMU are consultables on : <http://www.davar.gouv.nc>

Final Agricultural Production 2004

Percentage breakdown by agricultural



- (1) unit : one thousand litres of milk.
 (2) tonnage equivalent to 2 794 482 dozen.
 (3) including rabbit keeping and game birds.
 (4) estimated value. Note : 159 births declared in 2004, including 137 in the South Province and 22 in the North Province.
 (5) sources : DAVAR monthly survey, ERPA, Wholesale market, OCEF, FCTE.
 (6) 2003 fruit crop was seriously affected by cyclone Erica. This accounts for the significant increase in production between 2003 and 2004.
 (7) estimated turnover.
 (8) tonnage equivalent to 4,623 m³ of lumber.
 (9) produced units: posts, poles, stakes
 (10) mainly end products (129 tons of oil and 93 tons of oil-cake).
 (11) reared oysters only, tonnage equivalent to approx. 73 100 dozen.

Abréviations (for all Memorandum tables) :

ng : data not given.

na : data not available.

/// : due to product specificities or non-comparable quantities, no realistic figure may be quoted.

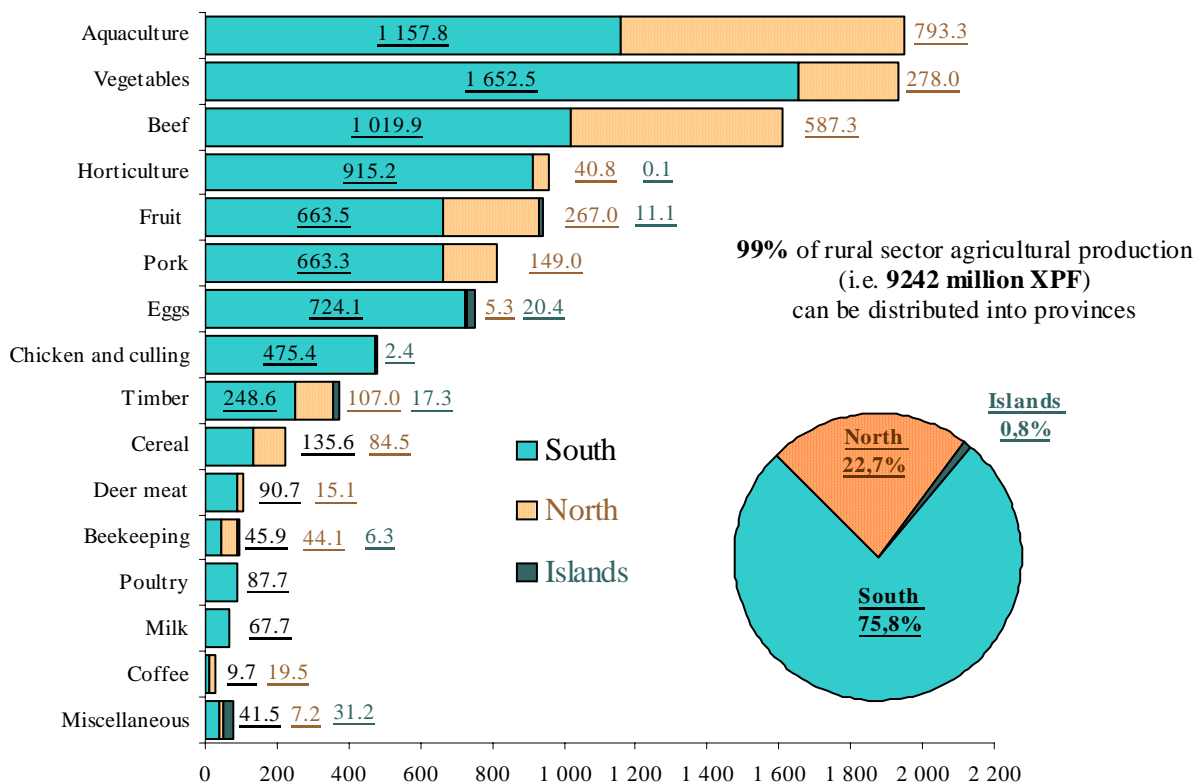
* **Evol/03** : trends shown in the 2004 memorandum are calculated in relation to the revised 2003 memorandum figures.

Marketed production (turnover)

	Total in million XPF		Tons or Unity (u)	
	2004	Evol/03*	2004	Evol/03
Cattle	1 695,1	0,9%		
meat	1 625.5	0.8%	4 020.3	-0.1%
livestock exports	1.9	///	3 u	///
milk ⁽¹⁾	67.7	-0.5%	845.9 u	0.7%
Poultry farming	1 323.0	-3.3%		
eggs ⁽²⁾	749.9	2.5%	1 843.3	-1.2%
chicken + culling	477.8	-8.1%	818.5	-9.2%
poultry ⁽³⁾	87.7	-15.0%	83.0	-21.2%
livestock exports	7.7	-40.7%	36 303 u	-44.2%
Pigs	818.6	5.0%		
meat	815.7	5.0%	1 750.2	4.7%
livestock exports	2.9	20.0%	51 u	-15.0%
Small ruminants	112.7	14.5%	270.1	22.2%
deer meat	105.8	12.9%	256.2	21.0%
mutton and goat meat	6.9	46.1%	13.8	49.4%
Horse breeding⁽⁴⁾	31.0	6.9%		
Beekeeping (honey)	96.3	107.8%	106.8	94.5%
Fruits & vegetables⁽⁵⁾	2 907.1	18.1%	16 251.7	12.1%
fresh vegetables	1 390.8	-0.7%	5 959.8	-9.1%
fruit ⁽⁶⁾	942.7	50.2%	4 538.6	54.9%
dried onions	216.1	313.8%	1 025.6	92.3%
squash	164.4	8.9%	2 880.0	5.1%
tropical tubers	123.8	-29.5%	468.0	-31.0%
potatoes	69.2	26.0%	1 379.6	29.9%
Horticulture⁽⁷⁾	956.0	8.6%		
Timber sector	372.9	-2.2%		
lumber ⁽⁸⁾	259.3	-10.2%	3 467.3	-3.1%
industrial timber ⁽⁹⁾	62.5	32.0%	105 185 u	30.2%
niaouli, sandalwood	46.6	25.1%	2.5	-1.8%
sandalwood by-products	4.5	-43.7%	49.6	9.6%
Coffee	29.2	305.0%	60.0	233.3%
Copra⁽¹⁰⁾	19.2	40.0%	273.0	43.7%
Vanilla	15.0	114.3%	0.5	78.6%
Cereals	220.1	-7.5%	5 487.0	-10.3%
TOTAL Agriculture	8 596.2	7.6%		
Aquaculture	1 951.1	31.7%		
prawns	1 884.0	32.8%	2 211.0	29.8%
oysters ⁽¹¹⁾	49.9	-0.6%	69.4	-0.9%
crayfish	17.2	30.3%	9.6	8.6%
TOTAL Rural sector	10 547.3	11.3%		

Sources : DAVAR, Provinces, ERPA, OCEF, FCTE, ARBOFRUITS, Chambre d'Agriculture, AICA, UPRA bovine, porcine, équine, UPROC.

**Marketed agricultural production,
breakdown by Province** (provisional figures, million XPF)



Marketed fertilizers in 2004 : 5 225 tons (+11.7% compared to 2003)

	Tons
South Province	4 313.90
North Province	906
Islands Province	5.5
TOTAL	5 225.40

Use*	Tons
Pasture	832.2
Market gardening	743.3
Fruits	657.3
Cereal	324.4
Squash	302.9
Potatoes	128.0
Others	638.0

Types d'engrais*	Tons
17.17.17	916.2
Urea	494.8
13.13.21	416.6
0.32.16	314.7
Potassium sulphate	193.7
Hyperphosphate	150.3
Other fertilizers	1 139.8

Source : Chamber of Agriculture

* breakdown only includes fertilizers stockpiled in Ducos (Nouméa) and sold to professionals.

Phytosanitary products marketed in 2004 : 115 tons (-10%/2003)

Category	Herbicides	Insecticides	Fungicides	Misc.	Total
Tons	62.6 (-16%)	18.8 (-28%)	15.8 (+26%)	17.4(+19%)	114.6

Source : DAVAR-SIVAP

ADRAF land market trends, 1995 - 2004

		1995	1996	1997	1998	1999	2000	2001	2002	2003	2004
Purchases	P. Nord	1 191	501	287	235	846	428	401	1 310	501	488
	P. Sud	104	1 347	1 713	495	25	5	570	578	95	95
	Total	1 295	1 848	2 000	730	871	433	970	1 888	596	583
Allotments	P. Nord	2 522	1 514	nd	1 049	355	1 121	1 682	1 376	1 776	367
	P. Sud	1 902	1 008	nd	1 263	3	1 309	587	613	506	339
	Total	4 424	2 522	3 730	2 312	358	2 430	2 269	1 989	2 282	706
Stock	P. Nord	20 818	19 836	18 926	18 201	18 776	18 145	16 859	16 778	15 562	15 671
	P. Sud	7 413	7 762	7 239	6 471	6 590	5 307	5 791	5 741	5 401	5 164
	Total	28 231	27 598	26 165	24 672	25 366	23 452	22 650	22 519	20 963	20 835

Source : ADRAF

Unit : hectare

Agricultural produce imports in 2004 ...

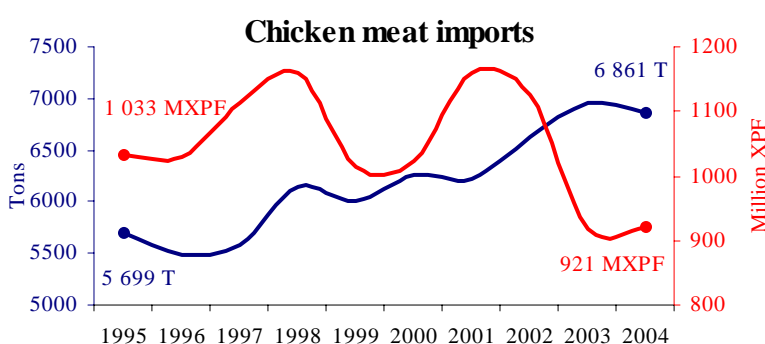
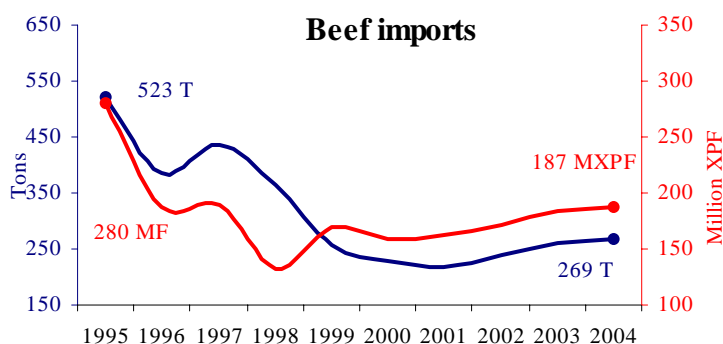
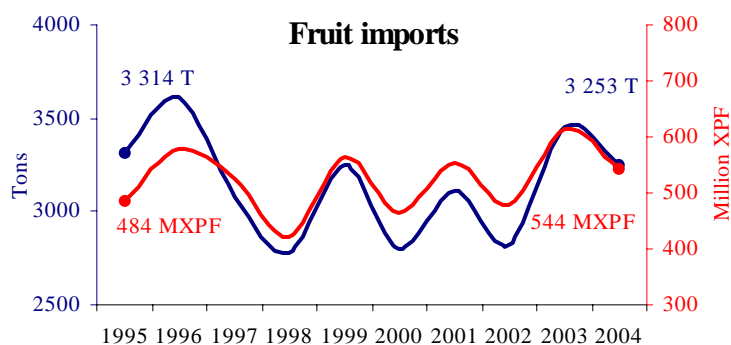
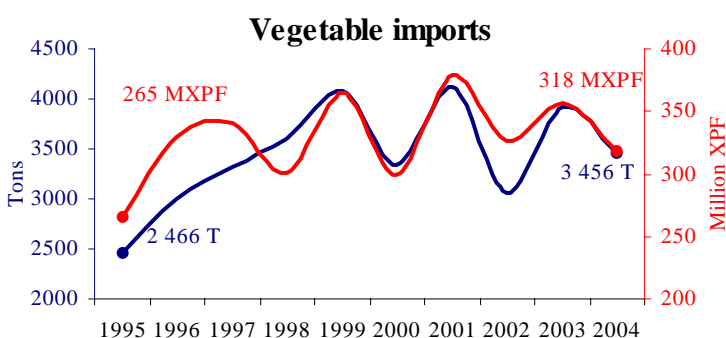
- (1) unit in equivalent thousand of litres of milk
- (2) 8 809 chicks (6 498 cocks and hens, 2 311 other poultry animals) and 8 ostriches.
- (3) including dried fruit and vegetables.
- (4) 11 913 tons of uncut timber and sawn or prepared timber (excluding charcoal and plywood), equivalent to approx. 17 042 m³, for 589.8 million XPF, and 0.46 million XPF of niaouli essential oil.
- (5) gross tonnage including green coffee, roasted coffee, instant coffee and other coffee extracts and essences, equivalent to approx. 837 tons of green coffee (according to the 2001 International Coffee Agreement)
- (6) 5.2 tons of prawns, 0.6 ton of oyster spats and 124.4 tons of oysters.

	Total*	Evol/03	Tons/U	Evol/03
Cattle	192.6	-3.9%		
beef	186.9	1.8%	269.4	2,7%
breeding animals	3.6	-78.3%	14 u	-84,3%
bull semen	2.1	///		///
Milk & dairy products ⁽¹⁾	2 560.2	7.8%	65 497.0	-0,4%
Aviculture	1 121.6	2.1%		
chicken meat	921.5	0.4%	6 861.3	-1,4%
poultry meat	161.5	15.1%	324.0	-3,5%
hatching eggs	33.8	-1.5%	43.5	-6,3%
livestock ⁽²⁾	4.9	-20.6%	8 817 u	-57,9%
Pigs	49.0	17.2%	0.0	0,0%
pork	49.0	17.2%	215.7	18,2%
Small ruminants	278.6	1.6%		
mutton & lamb	275.9	1.0%	445.0	-14,5%
deer meat	0.0	-95.1%	0.0	-98,2%
breeding mutton & lamb	2.6	325.6%	71 u	1 083,3%
Donkeys and horses	18.5	26.8%	27 u	-12.9%
Beekeeping	2.3	-20.1%	4.5	-9.8%
Fruits and vegetables ⁽³⁾	862.0	-11.2%	6 709.6	-9.0%
fruit	544.1	-11.4%	3 253.5	-5.8%
vegetables	219.4	-14.5%	1 323.5	-23.6%
potatoes	69.6	47.6%	1 467.0	36.8%
onions	28.9	-46.0%	665.7	-40.4%
Horticulture	122.4	-0.5%		
Timber sector ⁽⁴⁾	590.3	-8.4%		
Coffee ⁽⁵⁾	246.6	-6.1%	572.9	-2.0%
Vanilla	2.4	25.5%	0.9	67.1%
Cereals	1 134.4	0.6%	35 973.6	-0.6%
Total agriculture	7 180.9	0.6%		
Aquaculture ⁽⁶⁾	89.1	-6.8%		
Total imports	7 270.0	0.5%		

Sources : Customs and OCEF (potatoes)

^(*)Total : CAF cost in million XPF

...and import trends over a 10-year period (some sectors)



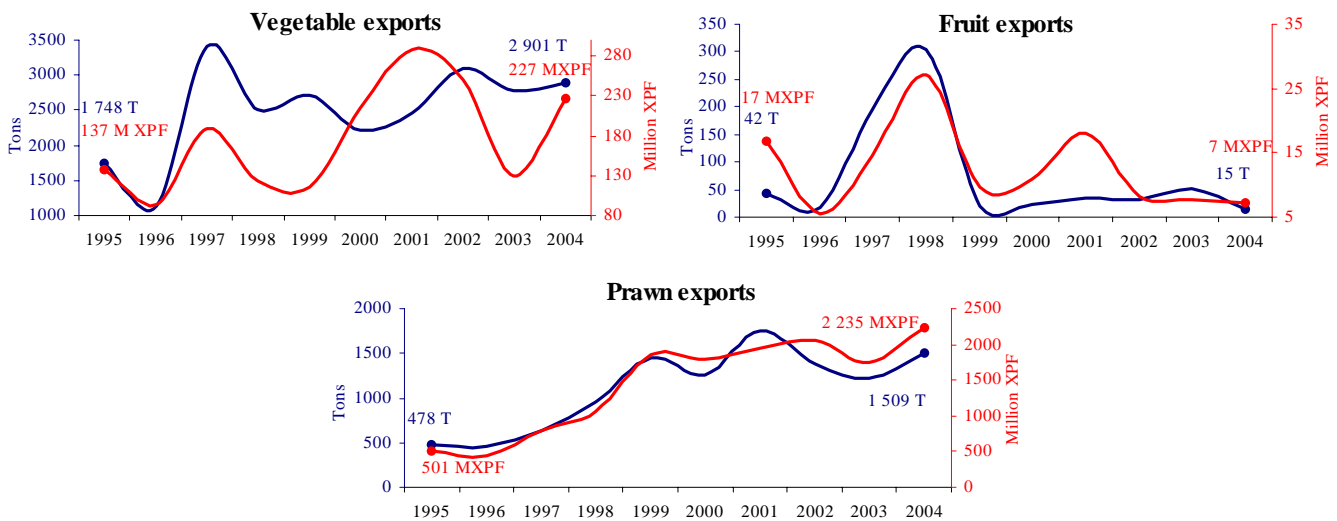
Agricultural produce exports in 2004

	Total *	Evol/03	Tonnes/U	Evol/03
Livestock	12.5	-18.8%	36 357u⁽¹⁾	-44.2%
Meat	53.2	52.1%	115.7	50.1%
deer meat representing	52.8	54.2%	115.1	50.7%
Fruits⁽²⁾	7.3	-5.8%	14.7	-71.4%
Vegetables	227.0	76.0%	2 901.0	4.2%
squash representing	225.0	79.8%	2 844.0	5.1%
Essential oils⁽³⁾	64.5	64.9%	2.2	45.0%
Others	3.4	5.3%		///
Total agricultural production	368.0	60.4%		///
Prawns	2 235.5	27.9%	1 508.5	24.2%
Total exports	2 603.4	31.7%		

- (1) 36 303 poultry,
51 pigs et 3 cattles
(2) mainly lime and
lychee
(3) sandalwood and
niaouli.

Sources : Customs, FCTE, SOPAC

⁽⁶⁾Total : FOB cost in million XFP



The financing of agriculture in 2004

Incentive packages (in million XFP)	North	South	Islands	Total	Evol/03
Incentives and subsidies allocated by New Caledonia				1 288.0	-20.8%
- TGI (agric./breeding/aquacult.) exemption	no breakdown possible			171.1	+73.5%
- FDEB (70,2%) and FDEOCC (29,8%) subsidies	no breakdown possible			45.0	+0.4%
- ERPA aid	no breakdown possible			665.1	-24.6%
- power consumption assistance	no breakdown possible			95.3	+73.2%
- agricultural disaster assistance	75.0	234.3	2.2	311.5	-42.8%
Incentives and subsidies allocated by Provinces	227.3	260.0⁽¹⁾	7.2	494.4	-11.7%
- micro-project assistance, CPI,...					
Incentives and subsidies allocated by France	49.9	47.6	0.8	98.3	+3.4%
- FEPNC subsidies	35.6	7.0	0.8	43.4	+22.1%
- ICAP contributions	14.3	40.6	0.0	54.9 ⁽²⁾	-7.7%

(1) not including the provision of plants for reforestation, coffee plants or orchards.

(2) including 16 million XFP of capital contribution and 38.9 million XFP in advances on current accounts (including 1.2 million XFP as accompanying measures).

Loans

- **BCI** : agriculture and aquaculture : 567 million XFP (1 980 MXPF in 2003)
- **CAM** : agriculture : 1 331.3 million XFP (1 261.5 MXPF in 2003)

Major sectors in 2004

Beef

Local production:

Category	Slaughtered tonnage (bled out meat)		Average producer price (XPF/kg)	
	2004	04/03	2004	04/03
Mature cattle	2 515	-1.1%	401	+1.5%
Young cattle	329	+11.1%	390	-0.8%
Calves	1 176	-0.8%	416	+0.2%
TOTAL	4 020	-0.1%	404	+0.9%

Sources : OCEF, DAVAR

OCEF slaughtering :

16 085 head (compared to 16,506 in 2003) for **3 124** tons (3 142 tons en 2003) et **465** head for **73** tons slaughtered as provision of a service (465 heads for 90 tons in 2003).

Domestic butchery slaughtering :

4 767 head (compared to 4 718 in 2003) for **823** tons (794 tons in 2003).

Slaughtering total:

21 317 head for **1 626** million XPF

Artificial inseminations (A.I.) and artificial inembryonation (A.E.) :

Number of A.I. : **581** (501 in 2003)

success rate : **51.9 %**

Number of A.E. : **120** (20 in 2003)

gestation rate : **34 %** Source : UPRA bovine

Pork

Slaughtering (OCEF) :

Approved quotas : 13 206 pigs, slaughtered : **14 091** (14,050 in 2003) for **1 184** tons (1,182 in 2003)

Average producer sale price : **468 XPF/kg** (+0,1% compared to 2003).

Slaughtering as provision of a service : **1 251** pigs for **77** tons (1,138 for 76 tons in 2003).

Domestic butchery slaughtery):

6 954 pigs for **489** tons (6,025 for 414 tons in 2003).

Slaughtering total : **22 296** animals accounting for **1 750** tons, for a total of **816** million XPF.

Fruit

Imports	
3 253 tons 544 million XPF <i>(% of tonnage)</i>	
inc. apple	46.1 %
grape	16.1 %
pear	13.7 %
kiwi	5.3 %
orange	4.1 %
peache, nectarine	3.1 %

Local fruit marketing			
Total fruit sales		Wholesale market sales	
4 524 tons 938 million XPF		2 400 tons 475 million XPF	
inc. orange	1 062 T	525 T	174 F XPF/kg
banana	1 124 T	588 T	247 F XPF/kg
watermelon	750 T	584 T	84 F XPF/kg
pineapple	398 T	153 T	206 F XPF/kg
melon	270 T	131 T	305 F XPF/kg
tangerine	228 T	97 T	177 F XPF/kg

Vegetables

Imports	
3 456 tons 318 million XPF <i>(% of tonnage)</i>	
inc. potatoe	42.4%
onion	19.3%
carrot	10.3%
garlic	4.9%
tomatoe	2.3%
celery	1.2%

Local fresh vegetable marketing			
Total vegetables sales		Wholesale market sales	
8 344 tons 1 667 million XPF		4 508 tons 956 million XPF	
Inc. potatoe	1 380 T	12 T	138 XPF/kg
tomatoe	1 185 T	854 T	299 XPF/kg
lettuce	1 099 T	483 T	330 XPF/kg
onion	1 026 T	700 T	211 XPF/kg
cucumber	805 T	601 T	93 XPF/kg
chinese cabbage	715 T	540 T	159 XPF/kg

Climatology 2004

	BOURAIL	KOUMAC	POINDIMIE	NOUMEA	OUANAHAM
Rainfall (mm) total	1 146.2	774.2	1 874.4	986.6	1 436.0
Comparison with average rainfall	-1.8%	-21.2%	-29.1%	-6.8%	-15.5%
Maximum rainfall in 24h (mm)	157.6 (27/06)	112.2 (03/03)	173.4 (10/05)	91.2 (06/12)	201.8 (20/10)
Temperature (°c) average	22.5 °c	23.8 °c	23.8 °c	23.5 °c	23.1 °c
Absolute maximum	36.1° (25/02)	35.6° (25/02)	34.0° (27/02)	35.0° (03/02)	33.6° (06/02)
Absolute minimum	6.9° (24/07)	12.1° (24/07)	13.6° (24/07)	14.5° (19/08)	8.1° (07/08)
Average sunshine duration (hours/day)	na	7.1 (-4.4%/03)	5.3 (-11.8%/03)	7.4 (+5.1%/03)	na

Source : Météo France / New Caledonia

• Exceptional weather events :

Cyclones : « Ivy » (February 25th-27th). « Grace » (March 21st-25th)

Rainfall : May 10th : 275.6 mm in 24 hours at the Aoupinié

Wind : gust speed record on June 17th, at Thio SLN (119 km/h)

Agricultural training in 2004

All information about **agricultural training** courses and validation of previous experience (**VAE**) :

- Direction de l'agriculture, de la forêt et de l'environnement - tel : 23.24.30
- New Caledonian Agricultural Education Internet portal : <http://www.formagri.nc>

• Secondary vocational education

- **Lycée agricole de Nouvelle-Calédonie** - Pouembout - tel : 47.70.40 and legta.pouembout@educagri.fr
Brevet d'Etudes Professionnelles Agricoles (BEPA). Brevet de Technicien agricole (BTA). Bac Technologique. Bac Professionnel. BTSA
- **Lycée professionnel agricole Do Neva** - Houaïlou - tel : 42.52.36 and ladoneva@formagri.nc
CAPA. BEPA. Bac Professionnel
- **Maisons familiales et rurales** : Ouvéa. Lifou. Bélep. Hienghène. Koné. Pouébo. Poindimié and Canala - tel : 28.28.26 and ctmfr@canl.nc - **CAPA** (and **BEPA** in Koné and Pouébo)

• Vocational training : contact the IOPP'S plan of the APE - tel : 05 07 09

- **Centres de Formation Professionnelle et de Promotion Agricoles** :
CFPPA Nord : CAPA. BTA. BTSA. **qualifying training courses** (Pouembout - tel : 47.26.44)
CFPPA Sud : BPA. Brevets Professionnels. **qualifying training courses**
(Mont-Dore - tel : 43.01.43 and cfppasud@canl.nc)
CFPPA des Iles : **qualifying training courses** (tel Lifou : 45.19.25 / tel Maré : 45.40.85)
- **Centre de Formation des Apprentis Agricoles (CFAA) de la Chambre d'Agriculture** :
CAPA - tel : 24.31.69 and canc-cfaa@canl.nc
- **Groupement du Service Militaire Adapté (SMA) de Koumac** :
CAPA - tel : 47.74.00 and gsma-nc@offratel.nc

Students enrolments and examinations results over the last three years

	Enrolled students	CAPA		BEPA		BTA		BTSA		BAC (Vocational & technical)	
		Present	Passes	Present	Passes	Present	Passes	Present	Passes	Present	Passes
2002	687	69	27	70	49	40	16	24	10	35	21
2003	716	67	30	74	47	43	18	17	10	41	27
2004	662	95	39	61	38	34	18	14	6	36	25

Source : Direction de l'agriculture, de la forêt et de l'environnement

Some figures of the ornamental horticulture sector in 2003

(survey conducted by the DAVAR in August and September 2004)

In 2003, the ornamental horticulture industry, mainly located in the Nouméa region (area), employs **333 men and women** (full-time and part-time) and represents **168 companies**.

	Number of companies	Surfaces in ares
South Province	119	9 816
North Province	47	500
Isl. Province	2	2
TOTAL	168	10 318

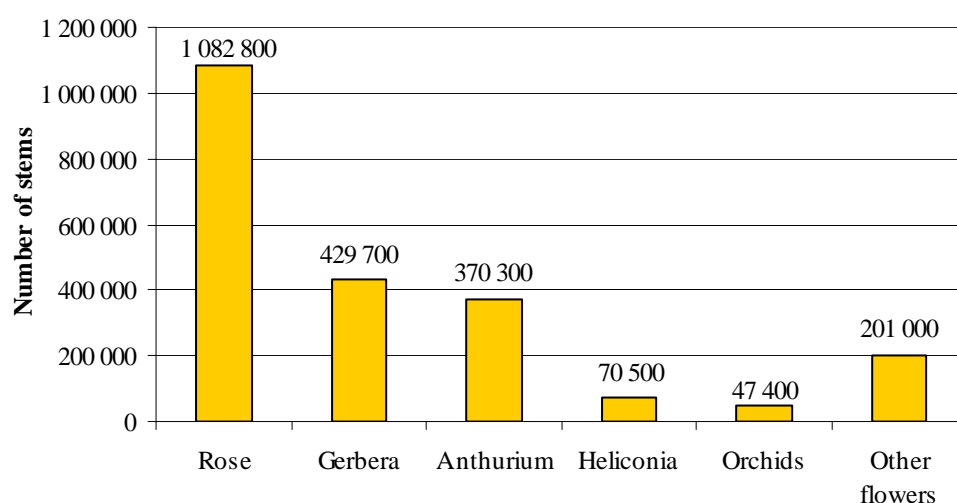
Turnover (in million XPF)	
Decorative plants	531.6
Cut flowers	345.6
Cut foliages	2.7
TOTAL	879.9

Accounting for 11% of the final agricultural production in 2003, this sector stands in fourth position of the big New-Caledonian agricultural speculations, after fruit and vegetables (31%), the cattle sector (21%), poultry farming (17%) and before the pork production (10%).

With 122 million XPF of imported products in 2004, local production prevails up to 89% in the ornamental horticulture market.

Cut flowers... :

Leading marketed flowers



↳ Roses, gerberas and anthuriums account for 87% of this production's market value.

Ornamental plants... :

↳ Plants for clumps and flowerpots, trees, shrubs and flowering vines, and finally palm trees and cypas account for 70% of the ornamental plants market share.

Leading marketed ornamental plants

