

# Agricultural Memorandum Data 2007

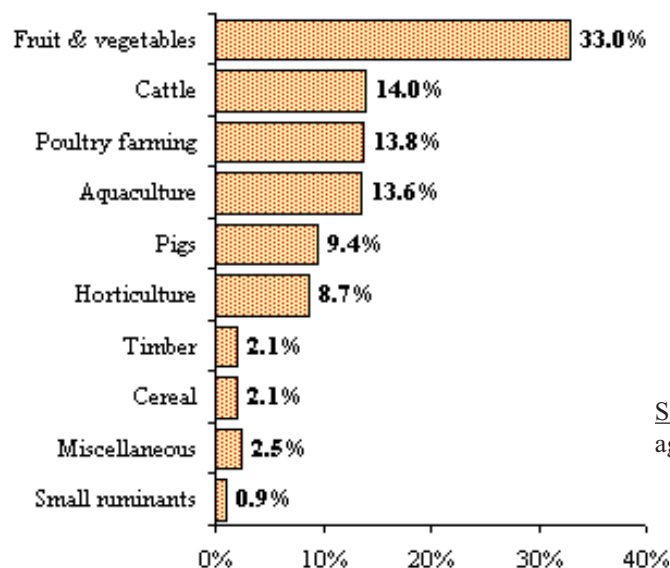


209, rue Auguste Bénébig - Haut Magenta  
BP 256 - 98845 NOUMEA Cedex  
Tel.: (687) 25.51.25 . Fax: (687) 25.51.29  
E-mail: [oaa.davar@gouv.nc](mailto:oaa.davar@gouv.nc)  
Internet site : <http://www.davar.gouv.nc>

July 2008

# FINAL AGRICULTURAL PRODUCTION 2007

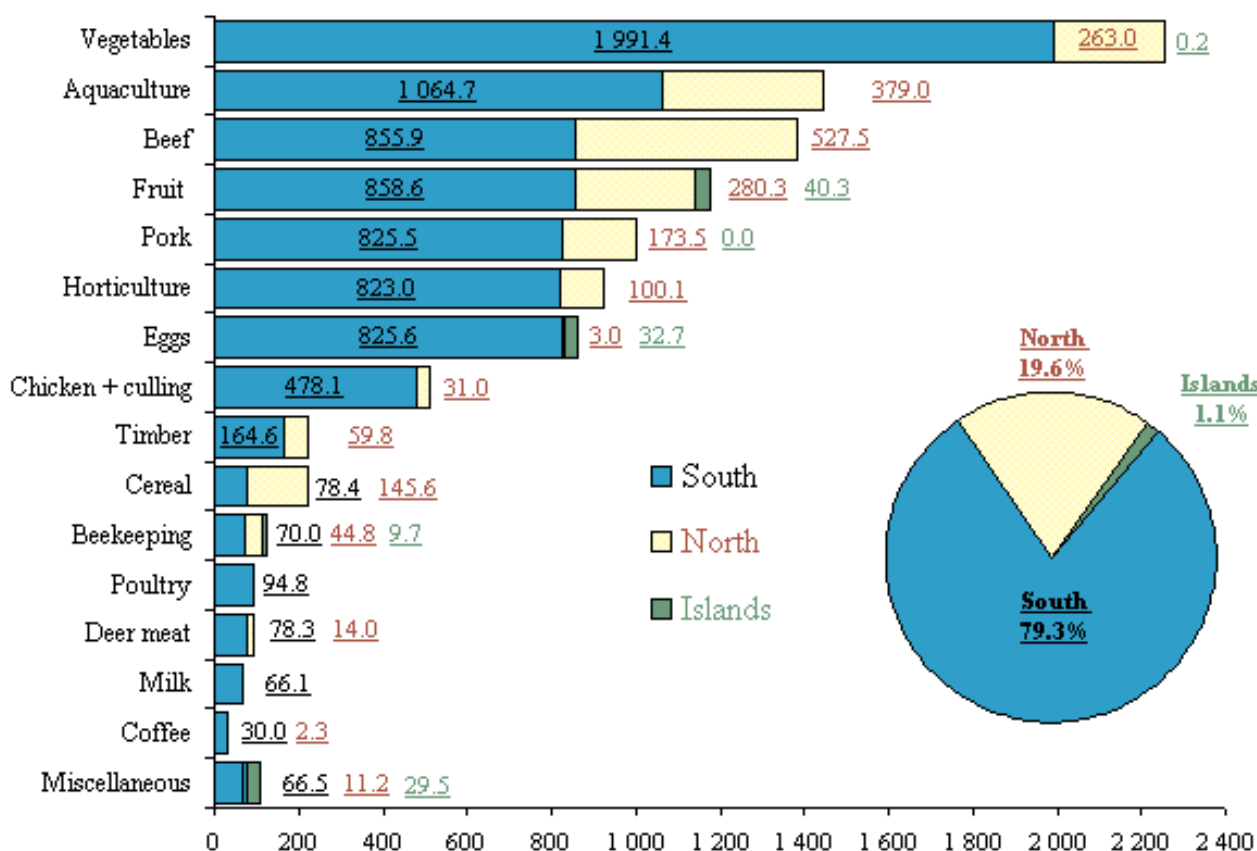
**Percentage breakdown by rural sector**



	Total in million XPF	
	2007	Evol/06
Vegetable production	4 770.0	8.6%
Animal production	4 208.1	6.8%
<b>Total agriculture</b>	<b>8 978.2</b>	<b>7.8%</b>
Aquaculture	1 443.7	-14.1%
Timber	224.4	-20.0%
<b>Total Rural sector</b>	<b>10 646.3</b>	<b>3.5%</b>

Sources : DAVAR, Provinces, ERPA, OCEF, FCTE, ARBOFRUITS, Chamber of agriculture, UPRA bovine, porcine, équine, ovine et caprine, GFA

**Marketed agricultural production, breakdown by Province**  
(provisional figures, million XPF)



**Abbreviations** (for all Memorandum tables) :

**ng** : data not given

**na** : data not available

**///** : due to product specificities or non comparable quantities, no realistic figure may be quoted.

**Evol/06** : trends shown in the 2007 memorandum are calculated in relation to the revised 2006 figures, which are sometimes different from those published in the memorandum of July 2007.





# ANIMAL PRODUCTION

## Marketed production in 2007

	Total in million XPF		Tons or Unity (u)	
	2007	Evol/06	2007	Evol/06
<b>Cattle</b>	<b>1 485.5</b>	<b>12.5%</b>		
meat	1 419.4	12.9%	3 131.0	4.6%
including OCEF	4.1	55.5%	17.9	55.5%
including provision of a service	363.7	15.2%	810.8	5.6%
including domestic butchery	1 051.6	12.0%	2 302.3	4.1%
milk <sup>(1)</sup>	66.1	4.7%	826.3 u	4.7%
<b>Poultry farming</b>	<b>1 471.6</b>	<b>0.2%</b>		
eggs <sup>(2)</sup>	861.3	-2.4%	34.8 u	-3.1%
chicken + culling	509.8	2.0%	840.3	5.6%
poultry <sup>(3)</sup>	94.8	19.1%	81.3	19.0%
livestock exports	5.7	-13.3%	27 400 u	-14.1%
<b>Pigs</b>	<b>1 000.3</b>	<b>8.1%</b>		
meat	999.0	8.0%	2 092.8	6.1%
including OCEF	52.5	19.1%	123.6	19.6%
including provision of a service	338.8	12.7%	705.0	10.5%
including domestic butchery	607.6	4.7%	1 264.3	2.7%
livestock exports	1.3	176.5%	11 u	-8.3%
<b>Small ruminants</b>	<b>96.9</b>	<b>-17.5%</b>	<b>215.6</b>	<b>-16.4%</b>
deer meat	92.3	-17.4%	207.1	-16.5%
mutton and goat meat	4.6	-19.6%	8.4	-15.8%
<b>Horse breeding <sup>(4)</sup></b>	<b>29.4</b>	<b>-6.4%</b>		
<b>Beekeeping (honey) <sup>(5)</sup></b>	<b>124.5</b>	<b>72.9%</b>	<b>88.5</b>	<b>32.1%</b>
<b>Animal production (agriculture)</b>	<b>4 208.1</b>	<b>6.9%</b>		
<b>Aquaculture</b>	<b>1 443.7</b>	<b>-14.1%</b>		
prawns	1 350.0	-14.9%	1 843.0	-19.1%
oysters <sup>(6)</sup>	80.0	-0.2%	80.0	-7.6%
crayfish	13.7	-5.6%	7.6	-5.6%

(1) unit : one thousand litres of milk.

(2) unit : million eggs

(3) including rabbit keeping and game birds.

(4) estimated value. Note : 169 births declared in 2007, including 152 in the South Province, 17 in the North Province and 21 by artificial inseminations.

(5) estimated value.

(6) reared oysters only, tonnage equivalent to approx. 84 200 dozen.

**Pig sector :**  
**25 385 head slaughtered**  
**(24 282 in 2006)**

**OCEF average producer  
sale price :**

**481 XPF/kg**  
(+2.0% compared to 2006)

**Artificial inseminations :**

Inseminated sows. : **155**  
(140 in 2006)

Gestation rate (28 days) : **44 %**

Source : UPRa porcine

Sources : DAVAR, provinces, ERPA, OCEF, UPRa bovine, porcine, équine, ovine et caprine, GFA

**Bovine sector : 16 579 head slaughtered**  
**(16 342 in 2006)**

**Artificial inseminations (A.I.) and  
artificial inembryonations (A.E.) :**

Number of A.I. : **509** (522 in 2006) Gestation rate (45 days) : **41 %**

Number of A.E. : **105** (10 in 2006)

Source : UPRa bovine

Category	Slaughtered tonnage		OCEF average producer price (XPF/kg)	
	2007	Evol/06	2007	Evol/06
Mature cattle	1 828	5.7%	456	7.6%
Young cattle	255	4.7%	439	8.4%
Calves	1 048	2.9%	464	7.4%
<b>Total</b>	<b>3 131</b>	<b>4.6%</b>	<b>457</b>	<b>7.6%</b>

Sources : OCEF, DAVAR

## Exports in 2007

	Total *	Evol/06	Tons/U	Evol/06
<b>Livestock <sup>(1)</sup></b>	<b>7.5</b>	<b>6.2%</b>	<b>27 415 u <sup>(1)</sup></b>	<b>-14.1%</b>
<b>Meat, fat</b>	<b>46.0</b>	<b>13.8%</b>	<b>69.1</b>	<b>-4.5%</b>
deer meat representing	45.8	0.0%	68.8	-5.1%
<b>Others</b>	<b>1.4</b>	<b>430.4%</b>	<b>///</b>	
<b>Total animal exports (agriculture)</b>	<b>55.0</b>	<b>15.1%</b>		
<b>Prawns</b>	<b>1 527.4</b>	<b>-29.8%</b>	<b>1 306.7</b>	<b>-26.8%</b>
<b>Total animal exports</b>	<b>1 582.3</b>	<b>-28.9%</b>		

(1) 27 400 poultry (cocks and hens not exceeding 185g), 4 horses and 11 pigs

\*Total : FOB cost in million XPF

Source : Customs



# VEGETABLE PRODUCTION

(1) melon, watermelon, strawberry

(2) including pineapple, mango, lychee, papaya, avocado...

(3) mainly end products in 61 tons of oil and 45 tons of oil-cake.

(4) tonnage equivalent to 3 005 m<sup>3</sup> of lumber.

(5) produced units : posts, poles, stakes.

Marketed production in 2007	Total in million XPF		Tons or Unity (u)	
	2007	Evol/06	2007	Evol/06
<b>Vegetables</b>	<b>2 312.8</b>	<b>8.8%</b>	<b>10 242.3</b>	<b>-18.7%</b>
fresh vegetables	1 880.0	16.6%	7 137.1	8.8%
dried onions	209.4	71.7%	813.8	24.1%
tropical tuber	100.8	-2.8%	419.6	14.6%
squash	77.6	-47.4%	1 141.2	-58.4%
potatoes	45.0	-67.7%	730.6	-67.8%
<b>Fruits</b>	<b>1 198.7</b>	<b>10.2%</b>	<b>5 752.7</b>	<b>3.5%</b>
citrus fruits	447.5	31.5%	2 311.4	13.6%
sweet bananas	319.9	-0.2%	1 685.2	-0.9%
fruits of full field <sup>(1)</sup>	215.8	36.4%	765.9	-3.1%
Others <sup>(2)</sup>	215.5	-19.9%	990.1	-4.2%
<b>Horticulture</b>	<b>925.0</b>	<b>0.3%</b>		
<b>Coffee</b>	<b>32.3</b>	<b>138.5%</b>	<b>21.0</b>	<b>-16%</b>
<b>Copra <sup>(3)</sup></b>	<b>9.1</b>	<b>6.6%</b>	<b>129.3</b>	<b>-5.6%</b>
<b>Vanilla</b>	<b>5.2</b>	<b>-68.9%</b>	<b>0.1</b>	<b>-73.5%</b>
<b>Cereals</b>	<b>224.0</b>	<b>48.4%</b>	<b>5 741</b>	<b>45.1%</b>
<b>Niaouli, sandalwood</b>	<b>57.6</b>	<b>-3.9%</b>	<b>2.1</b>	<b>-10.6%</b>
<b>Sandalwood by-products</b>	<b>5.4</b>	<b>0.0%</b>	<b>45.0</b>	<b>0.0%</b>
<b>Vegetable production</b>	<b>4 770.0</b>	<b>8.6%</b>		
<b>Timber sector</b>	<b>224.4</b>	<b>-20.0%</b>		
lumber <sup>(4)</sup>	149.4	-21.8%	2 253.8	-12.3%
industrial timber <sup>(5)</sup>	75.1	-16.3%	87 074 (u)	-5.3%

Sources : DAVAR, Provinces, ERPA, OCEF, FCTE, ARBOFRUITS, Chamber of agriculture

(1) sandalwood and niaouli

(2) mainly lemon, lime and watermelon

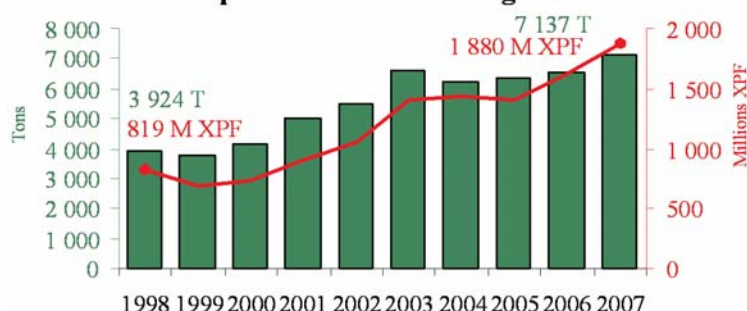
Exports in 2007	Total *	Evol/06	Tons/U	Evol/06
<b>Essential oils <sup>(1)</sup></b>	<b>86.1</b>	<b>-4.3%</b>	<b>1.5</b>	<b>-63.1%</b>
<b>Vegetables</b>	<b>33.8</b>	<b>-45.7%</b>	<b>1 131.9</b>	<b>-58.4%</b>
<i>squash representing</i>	<i>29.2</i>	<i>-51.4%</i>	<i>1 114.0</i>	<i>-58.9%</i>
<b>Fruits <sup>(2)</sup></b>	<b>20.7</b>	<b>45.0%</b>	<b>54.0</b>	<b>21.1%</b>
<b>Arabica coffee</b>	<b>6.6</b>	<b>76.2%</b>	<b>1.5</b>	<b>120.6%</b>
<b>Others</b>	<b>10.1</b>	<b>877.4%</b>		<b>///</b>
<b>Vegetable production</b>	<b>157.3</b>	<b>-8.2%</b>		

\*Total : FOB cost in million XFP

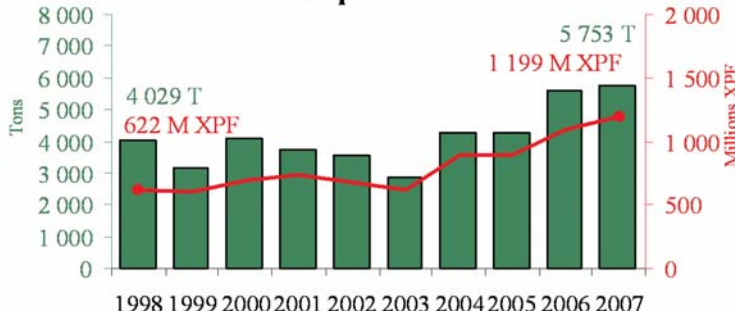
Sources : Customs, ERPA

## Marketed production trend over a 10-year period (fresh fruits and vegetables)

Marketed production of fresh vegetables



Marketed production of fruits



# AGRICULTURAL PRODUCE IMPORTS

(1) unit in equivalent thousand litres of milk

(2) including rabbit keeping

(3) 8 055 chicks (4 755 cocks and hens, 3 300 other poultry animals) and 84 rabbits.

(4) including dried fruits and vegetables

(5) unit in equivalent tons of green coffee (according to the 2001 International Coffee Agreement), that is, 749 tons (gross tonnage) including green coffee, roasted coffee, instant coffee and other coffee extracts and essences.

(6) 11 608 tons of uncut timber and sawn or prepared timber (excluding charcoal and plywood), equivalent to approx. 14 510 m<sup>3</sup>.

(7) 8.9 tons of prawns, 2.1 tons of oyster spats, 90.3 tons of oysters and 68 kg of crayfish.

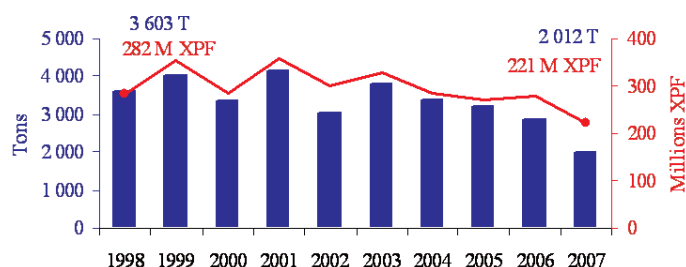
2007	Total*	Evol/06	Tons/U	Evol/06
<b>Cattle</b>	<b>821.6</b>	<b>17.5%</b>		
beef	795.6	14.0%	1 419.2	1.0%
breeding animals	20.7	///	43 (u)	///
bull semen	5.3	296.3%	///	///
<b>Milk &amp; dairy products <sup>(1)</sup></b>	<b>3 117.5</b>	<b>9.8%</b>	<b>64 851.6</b>	<b>-1.2%</b>
<b>Aviculture</b>	<b>1 475.6</b>	<b>23.3%</b>		
chicken meat	1 196.4	24.0%	8 138.5	19.4%
poultry meat <sup>(2)</sup>	241.5	21.7%	397.9	14.4%
hatching eggs	30.7	6.6%	36.8	-1.0%
livestock <sup>(3)</sup>	7.0	31.0%	8 139 (u)	-16.2%
<b>Pigs (pork)</b>	<b>106.9</b>	<b>5.8%</b>	<b>362.3</b>	<b>-4.4%</b>
<b>Small ruminants</b>	<b>293.2</b>	<b>-1.1%</b>		
mutton	291.8	-1.6%	527.8	-10.8%
deer meat	0.6	///	0.3	///
breeding mutton & lamb	0.8	///	2 (u)	///
<b>Horses</b>	<b>31.6</b>	<b>26.7%</b>	<b>29 (u)</b>	<b>16.0%</b>
<b>Beekeeping</b>	<b>1.9</b>	<b>-0.7%</b>	<b>3.6</b>	<b>23.6%</b>
<b>Fruits and vegetables <sup>(4)</sup></b>	<b>867.7</b>	<b>1.1%</b>	<b>5 700.2</b>	<b>-4.7%</b>
fruits	647.0	12.0%	3 688.5	17.9%
vegetables	191.3	-13.6%	1 308.1	2.3%
onions	12.0	-56.3%	224.2	-60.8%
potatoes	17.3	-44.1%	479.4	-52.1%
<b>Horticulture</b>	<b>108.2</b>	<b>-6.0%</b>		
<b>Coffee <sup>(5)</sup></b>	<b>425.7</b>	<b>9.1%</b>	<b>1 356.1</b>	<b>19.0%</b>
<b>Vanilla</b>	<b>2.9</b>	<b>59.5%</b>	<b>1.2</b>	<b>385.7%</b>
<b>Cereals</b>	<b>1 456.0</b>	<b>9.3%</b>	<b>40 078.7</b>	<b>-5.1%</b>
<b>Niaouli essential oil</b>	<b>2.1</b>	<b>///</b>	<b>0.7</b>	<b>///</b>
<b>Total agriculture</b>	<b>8 710.9</b>	<b>10.8%</b>		
<b>Timber sector <sup>(6)</sup></b>	<b>677.5</b>	<b>-3.8%</b>		
<b>Aquaculture <sup>(7)</sup></b>	<b>92.7</b>	<b>27.4%</b>		
<b>Total imports</b>	<b>9 481.1</b>	<b>9.8%</b>		

\*Total : CIF cost in million XPF

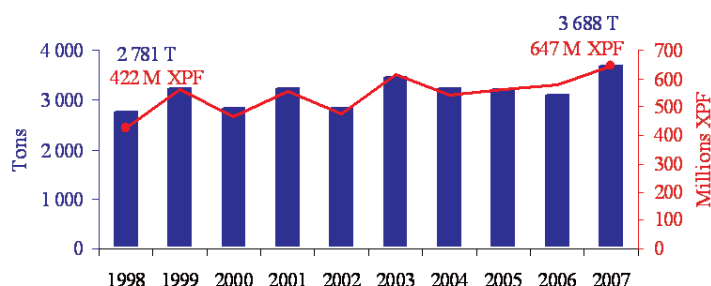
Sources : Customs

## Import trends over a 10-year period (some sectors)

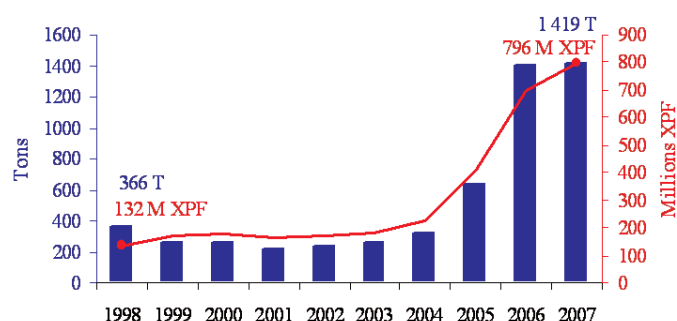
Vegetable imports



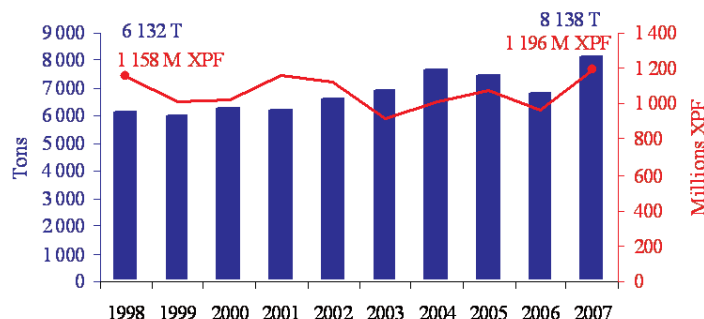
Fruits imports



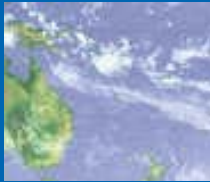
Beef imports



Chicken meat imports







# CLIMATOLOGY

Rainfall (mm)	Average	2007	2006/Average
<b>Koumac</b>	982.0	835.6	85.1%
<b>Koné</b>	1 095.7	1 027.4	93.8%
<b>Poindimié</b>	2 645.2	2 717.6	102.7%
<b>Canala</b>	1 679.8	1 377.6	82.0%
<b>Bourail</b>	1 076.6	1 278.2	118.7%
<b>Païta</b>	1 164.9	986.1	84.7%
<b>Yaté</b>	3 205.1	3 195.2	99.7%
<b>Ouanaham (Lifou)</b>	1 699.4	1 479.5	87.1%

## • Commentary :

Rainfall for the year has been a little lower than the annual average and with an uneven pattern of rainfall over the year. The beginning of the year was drier than the annual average, while there was a rainfall surplus occurring at the end of the year, related to a « La Niña » phenomenon. In September, it was exceptionally wet with many records broken.

## • Some memorable events :

### Rainy episodes :

- from the 2<sup>th</sup> to the 5<sup>th</sup> of March (East coast & South)
- from the 28<sup>th</sup> to the 29<sup>th</sup> of June (Western North & South)
- September 6<sup>th</sup>-7<sup>th</sup> (the whole of the main island)
- October 22<sup>th</sup>-23<sup>th</sup> (Islands)

### Temperatures :

- the lowest : 5.2°C the 14<sup>th</sup> of July in Wiwatul (Lifou)
- the highest : 37.8°C the 17<sup>th</sup> of February in Cap Maori

Wind : Strongest wind gust recorded on the 24<sup>th</sup> of August in Montagne des Sources (126 km/h)

Source : Météo France / New-Caledonia – Annual climatological summary 2007

# FERTILIZERS AND PHYTOSANITARY PRODUCTS

*Marketed fertilizers in 2007 : 4 844 tons (+9.4 % compared to 2006)*

	Tons
South Province	4 065.7
North Province	768.3
Islands Province	9.8
<b>TOTAL</b>	<b>4 843.8</b>

Use*	Tons
Market gardening	834.1
Pasture	685.0
Fruits	408.3
Corn	372.5
Squash	140.7
Potatoes	123.7
Horticulture	115.3
Others	663.3

Kind of fertilizer*	Tons
17.17.17	760.8
10.12.24	617.2
Urea	442.4
Lithothamne	254.0
0.32.16	166.5
Super phosphate	136.6
Sulphate of potash	124.5
Other fertilizers	840.9

Source : Chamber of agriculture

\* breakdown only includes fertilizers stockpiled in Ducos (Nouméa) and sold to professionals and multiservice centers.

*Phytosanitary products imported in 2007 : 105 tons  
(-23.0 % compared to 2006)*

Category	Herbicides	Insecticides	Fungicides	Misc.	TOTAL
<b>Tonnes</b>	57.3 (-20%)	25.1 (-3%)	11.0 (-5%)	11.4 (-58%)	<b>104.8</b>

Source : DAVAR-SIVAP



# THE FINANCING OF AGRICULTURE

Incentive packages (in million XPF)	State (1)	NC (2)	South (3)	North (3)	Islands (3)	TOTAL	Evol 06
<b>1 - agriculture and rural territories (4)</b>	<b>336.5</b>	<b>1 650.0</b>	<b>731.6</b>	<b>372.2</b>	<b>110.1</b>	<b>3 200.4</b>	<b>38%</b>
<b>11 - markets and agricultural incomes</b>	<b>73.4</b>	<b>1 397.4</b>	<b>462.7</b>	<b>119.7</b>	<b>78.8</b>	<b>2 132.0</b>	<b>39%</b>
Price support – cost reduction		756.8	438.1	91.1	5.5	1 291.6	
Producer assistance		291.0				291.0	
Marketing assistance		82.5	20.4	13.5	0.2	116.5	
Sector organization and modernization	8.0	52.0			69.0	129.0	
Promotion and quality management systems	65.4	39.6	3.8	14.4	4.0	127.3	
Risk management (including emergencies)		145.9				145.9	
Other actions		29.6	0.4	0.7	0.1	30.7	
<b>12 - rural development</b>	<b>259.6</b>	<b>155.0</b>	<b>269.0</b>	<b>249.5</b>	<b>31.3</b>	<b>964.4</b>	<b>28%</b>
Setting up, modernization, pollution control	11.9	11.1	268.7	192.1	31.3	515.2	
Cessation of agriculture activities		11.6				11.6	
Development and protection of the countryside	6.6		0.2			6.8	
Processing and marketing of agricultural produce	45.4			5.7		51.2	
Horse-related activities	1.4	26.3		1.7		29.4	
Others	194.2	106.0		50.0		350.2	
<b>13 - sanitary safety of plants and animals</b>	<b>3.5</b>	<b>97.5</b>		<b>3.0</b>		<b>104.0</b>	<b>235%</b>
<b>2 - aquaculture (4)</b>	<b>1.8</b>	<b>273.9</b>	<b>152.0</b>			<b>427.7</b>	<b>18%</b>
<b>3 - forestry (4)</b>	<b>99.8</b>	<b>17.4</b>	<b>74.1</b>	<b>80.6</b>		<b>271.9</b>	<b>60%</b>
<b>TOTAL 1 + 2 + 3</b>	<b>438.1</b>	<b>1 941.3</b>	<b>957.7</b>	<b>452.8</b>	<b>110.1</b>	<b>3 900.0</b>	<b>37%</b>
<b>4 - education and research (4)</b>	<b>998.8</b>	<b>109.1</b>	<b>245.5</b>	<b>93.0</b>	<b>55.0</b>	<b>1 501.4</b>	<b>-7%</b>

(1) High commission, DAFE, ADRAF

1€ = 119.33 XPF

(2) New Caledonia (DAVAR, Customs) and public corporations (ERPA, APICAN, Chamber of agriculture)

(3) South, North and Islands provinces

(4) The personnel and operating costs relating to the general and/or technical services of the different institutions were not taken into account. Only the category education and research includes these costs.

Note : this table presents an inventory of the financial grants made in 2007 to agriculture, aquaculture, forestry and agricultural education. The figures are not exhaustive and are likely to be amended in future publications.

## AGRICULTURAL TRAINING

All information about **agricultural training** courses (CAP to BTS)  
and **validation of previous experience (VAE)** :

Direction du service d'Etat de l'agriculture de la forêt et de l'environnement (DAFE)

Tel : 23.24.30 sfd.nouvelle-caledonie@educagri.fr

New Caledonian Agricultural Education Internet portal : <http://www.formagri.nc>

	Number of enrolled students and trainees	Number of graduates of the ministry of Agriculture							
		CAPA	BEPA	BPA	BP	BTA	BAC Technical & Vocational	BTSA	Total
2005	768	81	32	8	6	15	25	9	176
2006	771	84	38	5	6	19	25	13	190
2007	798	77	43	7	7	4	45	16	199

CAPA : Certificat d'aptitudes professionnelles agricoles / BP : Brevet professionnel / BTSA : Brevet de technicien supérieur agricole

BEPA : Brevet d'études professionnelles agricoles / BTA : Brevet de technicien agricole

BPA : Brevet professionnel agricole / Bac technical & vocational : technical & vocational Baccalauréat

Source : DAFE

**NEW ORGANISATION CHART OF THE DAVAR**  
(Decree n°2007-5681/GNC of the 27<sup>th</sup> of November 2007)

Postal address (*all departments*) : DAVAR - BP 256 - 98 845 Nouméa Cedex

**MANAGEMENT**

209, rue Auguste Bénébig - Magenta                      tel : 25 51 00                      fax : 25.51.29  
e-mail : [davar@gouv.nc](mailto:davar@gouv.nc)

**Administrative & Financial Department**

e-mail : [saf.davar@gouv.nc](mailto:saf.davar@gouv.nc)                      tel : 25 51 02 (Magenta)                      fax : 25.51.29

**Water & Rural Statistics and Surveys Department**

e-mail : [seser.davar@gouv.nc](mailto:seser.davar@gouv.nc)                      tel : 25 51 12 (Magenta)                      fax : 25.51.29

→ **Rural affairs**

- \* *Assistances, surveys and regulation*
- \* *Assistance control*
- \* *Statistics*

→ **Water resource unit**

- \* *Measures/surveys of the water resource*
- \* *Preservation of the water resource*

**Veterinary, Food & Phytosanitary Inspection Department**

2, rue Russeil - Port autonome                      tel : 24 37 45                      fax : 25 11 12  
e-mail : [sivap.davar@gouv.nc](mailto:sivap.davar@gouv.nc)

→ **Food security**

→ **Biosecurity**

- \* *Border inspection*
- \* *Risk analysis and phytosanitary inspection*
- \* *Risk analysis and animal health*  
(and animal quarantine)

tel : 41 25 36 (Koutio)

→ **Decentralized offices**

- \* *Border inspection*
- \* *Center*
- \* *North*

tel : 35 11 94 (Tontouta)

tel : 44 11 52 (Bourail)

tel : 42 48 26 (Koné)

**Veterinary, Food & Phytosanitary Official Laboratories of New-Caledonia**

Port-Laguerre - BP 42 - 98890 Païta                      tel : 35 31 34                      fax : 35 30 40  
e-mail : [Inc.davar@gouv.nc](mailto:Inc.davar@gouv.nc)

→ **Veterinary Department**

- \* *Animal health*

→ **Food Département**

- \* *Chemistry*
- \* *Physico- chemistry*
- \* *Microbiology*

The figures for 2007 shown in this memorandum are provisional (data available on 30<sup>th</sup> of June 2008) and may be modified in future publications.

The publications of the Statistics section are consultable on : <http://www.davar.gouv.nc>.